

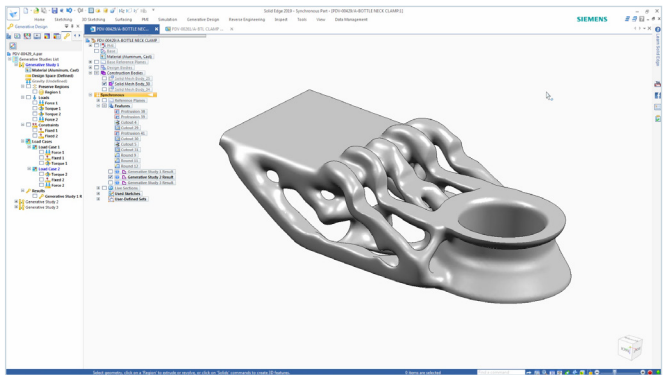


Solid Edge 2019

Next-generation product development for today's engineers

Solid Edge 2019 delivers next-generation product development solutions for today's engineers. The software includes best-in-class mechanical, electrical and PCB design, fully integrated simulation analysis and the latest tools for subtractive and additive manufacturing. Scalable data management, new requirements management capabilities and free, secure cloud-based project collaboration are also included.

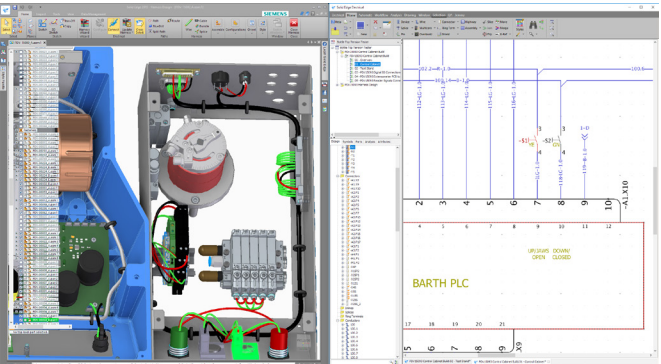
Mechanical design: Next generation design - today.



- New capabilities in Convergent Modeling™ allow engineers to incorporate mesh models into their design workflows, creating real designs, not just inspirational shapes
- Design for cost capabilities to keep product development on track and within budget
- Solid Edge P&ID Design, 2D flow diagram and symbol support for P&ID creation supporting strict governing requirements for plant design

- Solid Edge Piping Design – automated 3D piping design with comprehensive part libraries and fully automated isometric drawing output for plant design

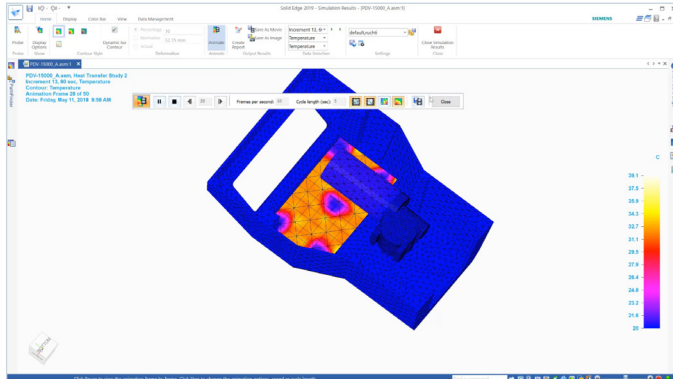
Electrical design: The best electrical design tools join the Solid Edge family.



- Solid Edge Wiring Design – wiring design and simulation tools for the rapid creation and verification of electrical systems
- Solid Edge Harness Design – rapid and intuitive harness and formboard design tools with automated part selection, design verification and manufacturing report generation
- Solid Edge PCB Design – schematic capture and PCB layout, including sketch routing, hierarchical 2D/3D planning and placement and ECAD-MCAD collaboration
- Solid Edge Electrical Routing – efficiently creates, routes and organizes wires, cables and bundles

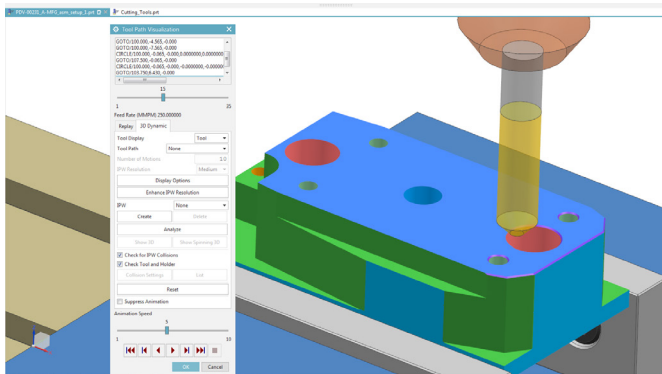
What's new in Solid Edge 2019

Simulation: Complex design validation just got easier.



- Enhanced structural and thermal simulation, including transient heat transfer
- Time-based history analysis enabling simulation of thermal and cooling performance
- Free surface flow simulation, lighting and radiation capabilities for digital what-if analysis

Manufacturing: Bring your ideas to life, in full color.

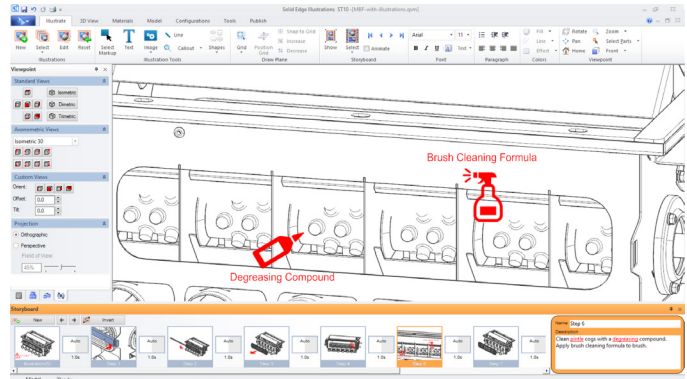


Solid Edge manufacturing provides the advanced tools needed to manufacture today's complex products, from CNC machining to 3D printing.

Introducing Solid Edge CAM Pro – a comprehensive, highly flexible system that uses the latest machining technology to efficiently program your CNC machine tools, from simple NC programming to high-speed and multi-axis machining.

- Associative toolpaths for parts and assemblies speed design changes and updates
- Automated print preparation and color printing for additive manufacturing
- Support for 3D printing services so you can compare price and delivery options to make your ideas a reality

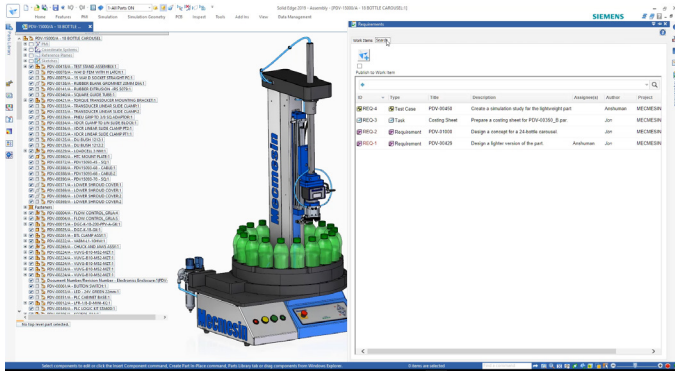
Technical publications: Clear communication. Clearly better.



New design-to-publication integration allows users to launch technical publication applications directly from within Solid Edge design.

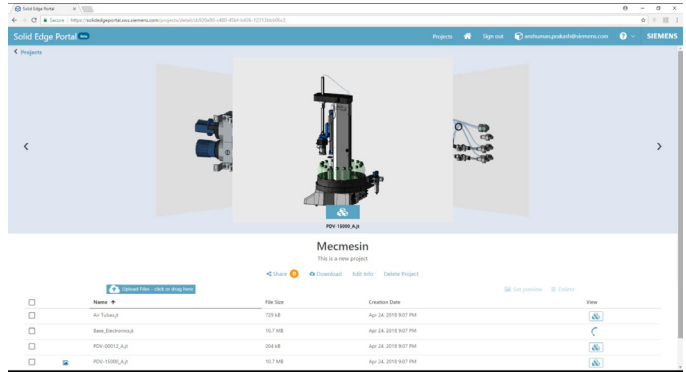
- Quickly create and publish detailed illustrations of your product designs
- Publish interactive digital documents for manufacturing, installation and maintenance work instruction packages
- Associative updates keep documents in sync when product designs change

Data management: Take control of your data, including your requirements.



- Introducing Solid Edge Requirements Management – capture and manage product design requirements and meet compliance standards with complete traceability
- Easy to set up, easy to administer

Solid Edge Portal: Make your mark with free cloud-based



collaboration. Free online CAD management, viewing and collaboration

- Cloud-based access for viewing and markup of CAD files on any device
- Secure, controlled sharing of project documents and CAD files

Siemens PLM Software
www.siemens.com/plm

Americas +1 314 264 8499
 Europe +44 (0) 1276 413200
 Asia-Pacific +852 2230 3308



844-GEO-SUPT
 support@geopl.com
 geopl.com

© 2018 Siemens Product Lifecycle Management Software Inc. Siemens, the Siemens logo and SIMATIC IT are registered trademarks of Siemens AG. Camstar, D-Cubed, Femap, Fibersim, Geolus, GO PLM, I-deas, JT, NX, Parasolid, Simcenter, Solid Edge, Syncrofit, Teamcenter and Tecnomatix are trademarks or registered trademarks of Siemens Product Lifecycle Management Software Inc. or its subsidiaries in the United States and in other countries. All other trademarks, registered trademarks or service marks belong to their respective holders.
 70764-A8 6/18 A