

**SIEMENS**

Siemens PLM Software

Easy Plan

Execute plant-specific detailed planning that leverages existing product design and manufacturing data

Benefits

- Standardize and re-use best practices
- Develop process plans that reflect plant level production scenarios
- Enable intuitive user experience and ease of use for process planning
- Leverage traceability and change management of process plans for global production scenarios
- Provide clear and up-to-date operator instructions
- Optimize cycle time and production rates
- Manage manufacturing processes for complex model-mix scenarios

Summary

In a global production environment, manufacturers find themselves looking for ways to reduce time-to-market, control costs and manage complexity while maintaining high quality. In this context, factors such as ergonomics, line balancing, forecasting production orders, labor costs and more must be considered in the planning and production phases.

Easy Plan, a role-based planning application, delivers key capabilities to support and execute detailed manufacturing planning at the plant level. Easy Plan helps you increase operational efficiency, reduce shop floor errors and maximize your overall engineering productivity. Built on top of the best-in-class Teamcenter® software product lifecycle management (PLM) backbone, Easy Plan helps you leverage existing product and process information as well as share cross-departmental workflows so you can plan and optimize your manufacturing process, capture shop floor feedback and manage changes effectively.

Easy Plan works in the Active Workspace client for Teamcenter. Active Workspace is an innovative web-based client platform that simplifies PLM for all users involved in your product lifecycle, speeding user adoption and shortening time-to-value by providing a streamlined and intuitive planning experience anytime, anywhere on any device.

Integrated engineering and manufacturing

Easy Plan provides one environment to capture all product and manufacturing data from different systems and helps you to manage global production scenarios. The ability to re-use standardized best practices and adjust them based on plant-level requirements leads to significant cost savings and productivity improvements. For centralized manufacturing planning, this approach overcomes the limitation of working with a subset of programs and product configurations. In this manner, any program can be adapted to reflect actual production scenarios.

Easy Plan

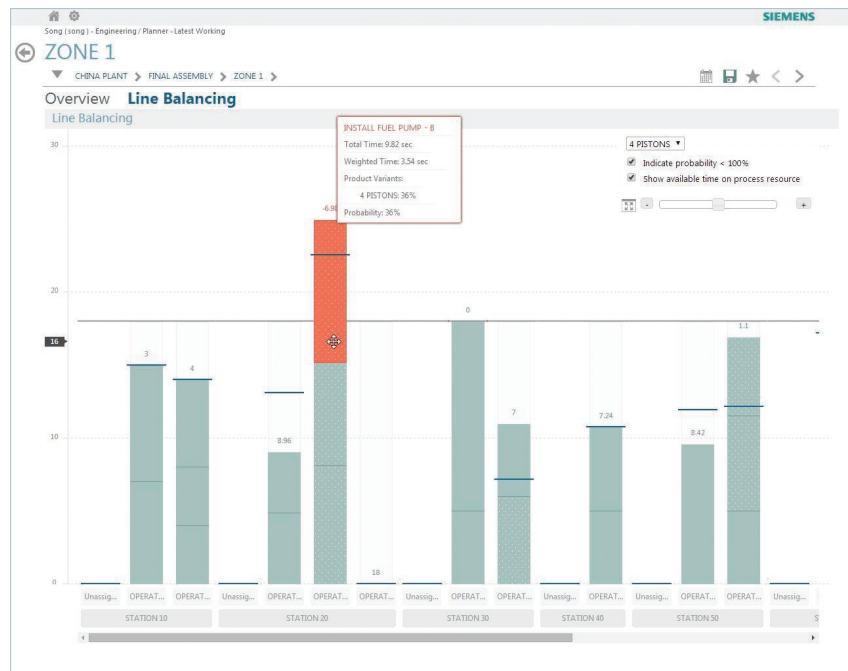
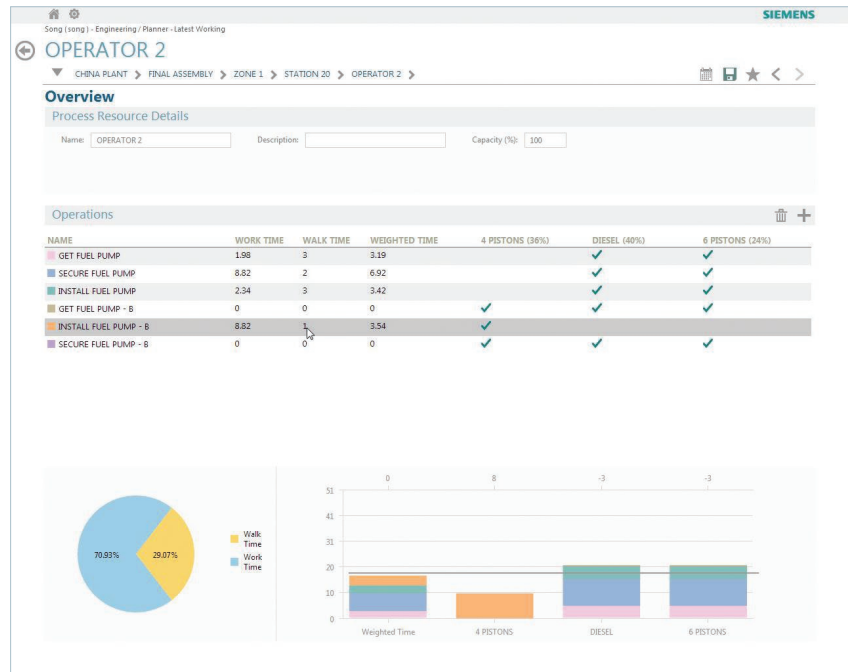
Easy Plan provides a collaborative environment in which factory planners take the process template defined by the central planning department and adapt it to their local resources and capabilities. This integrated central and factory-level planning approach allows better traceability and change propagation to make sure that costs associated with product modifications are minimized.

Flexible plant-level optimization of manufacturing processes

Easy Plan provides optimization tools for improving plant-specific activities with features such as line balancing, cycle time analysis and station-level walk path estimates. With Easy Plan, accurate production sequence and time analysis of value-added and nonvalue-added tasks can lead to maximum assembly productivity. Standard time data cards are integrated with Easy Plan to ensure cycle times are estimated accurately. What-if scenarios can be defined, executed and analyzed to ensure feasibility of assembly processes.

Features

- Process planning at the shop floor level
- Line balancing
- Operator instructions with time estimates
- Walk path analysis and sequencing of operations
- Ergonomic analysis
- Time analysis of value-added and nonvalue-added activities
- Standard data card integration
- Reporting of manufacturing operations
- Cycle time and production rate estimation
- Direct/indirect labor utilization



Increase shop floor operator efficiencies

With Easy Plan, shop floor workers will have access to intuitive operator instructions with 3D capabilities, which significantly reduces plant floor errors. Using a graphical interface, operator task sequences in a moving assembly line can be accurately analyzed and optimized for safety and efficiency. With this integrated approach, you can easily communicate and trace changes at any level of the product and process design. Using reports and analytics, changes affecting production can be monitored and timely corrective actions can be taken. With such collaborative planning, manufacturing plans accurately describe production scenarios for every model-mix variation for every plant location.

Easy Plan Lite and Easy Plan Pro solutions

Siemens PLM Software offers Easy Plan Lite and Easy Plan Pro to support different levels of use.

Easy Plan Lite is primarily intended for process authoring, product and tool assignment, process documentation, basic time management, operator instructions creation and report generation.

In addition to the capabilities of Easy Plan Lite, Easy Plan Pro includes time analysis, line balancing, virtual walk path assessment, alternate planning areas, ergonomic analysis, planning per a schedule (production orders) and direct/indirect labor analysis.

The screenshot displays the Siemens Easy Plan software interface. At the top, it shows the user 'song (song)' and the application 'Planner / S/Planner - Latest Working'. The main view is titled 'ZONE 1' and includes navigation options for 'CHINA PLANT', 'FINAL ASSEMBLY', and 'ZONE 1'. Below this, there are tabs for 'Overview', 'Product Assignment', and 'Line Balancing'. The 'Product Assignment' tab is active, showing a table of products with columns for NAME, ID, REVISION, QTY, and ASSIGNED. A list of products is shown, including various pump and motor components. To the right of the product table is a 'Stations' table with columns for NAME, DESCRIPTION, and CYCLE TIME, listing stations from 10 to 80. At the bottom left, there is a '3D Viewer' showing a 3D model of a blue mechanical component.

NAME	ID	REVISION	QTY	ASSIGNED
157Q-98374-A_CVR ASY-FU/PMP	PT-00000167	A	1	✓
W500102-S_BLT M06x1.00x40.0 HEX	PT-00000214	A	1	✓
Y1CQ-9N841-A_BLT-FU/NU PMP MITNG	PT-00000164	A	2	✓
W707127-S_NUT M12x1.5 HEX CAP	PT-00000170	A	1	✓
157Q-9K022-A_V1_L1_TUB ASY-FUL L	PT-00000171	A	1	✓
257Q-98395-A_PMP ASY-FUL BST	PT-00000216	A	1	✓
X57Q-9K346-B_CV_HLDR & NOZ ASY-F	PT-00000264	A	3	✓
257Q-98552-A_BRKT-FU/NU PMP	PT-00000215	A	1	✓
W520103-S_NUT M10x1.50 HEX FLNG	PT-00000162	A	1	✓
257Q-6K682-A_CHG ASY-ENG EXH DRV	PT-00000217	A	1	✓
257Q-9K022-A_IL_TUB ASY-FUL L&K	PT-00000218	A	1	✓
257Q-9D350-B_TUB ASY-FUL ALX PMP	PT-00000229	A	1	✓
ZC1Q-9A398-A_BRKT-FU/PM SHLD	PT-00000244	A	1	✓
257Q-9J523-A_PRRS3_TUB ASY-FU/PM	PT-00000247	A	1	✓
257Q-98900-A_C1MP ASY-FARR THROT	PT-00000248	A	1	✓

NAME	DESCRIPTION	CYCLE TIME
STATION 10		18
STATION 20		18
STATION 30		18
STATION 40		18
STATION 50		18
STATION 60		18
STATION 70		18
STATION 80		18

Contact

Siemens PLM Software
 Americas +1 314 264 8499
 Europe +44 (0) 1276 413200
 Asia-Pacific +852 2230 3308

www.siemens.com/plm

© 2014 Siemens Product Lifecycle Management Software Inc. Siemens and the Siemens logo are registered trademarks of Siemens AG. D-Cubed, Femap, Fibersim, Geolus, GO PLM, I-deas, JT, NX, Parasolid, Solid Edge, Syncrofit, Teamcenter and Tecnomatix are trademarks or registered trademarks of Siemens Product Lifecycle Management Software Inc. or its subsidiaries in the United States and in other countries. All other logos, trademarks, registered trademarks or service marks belong to their respective holders.
 43375-Y2 10/14 C