

SIEMENS



GEOMETRIC SOLUTIONS



Answers for industry.

Teamcenter Electronic Work Instructions

Intuitive web-based shop floor work instructions

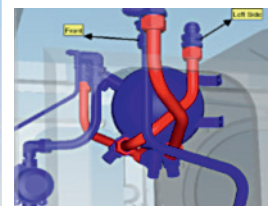
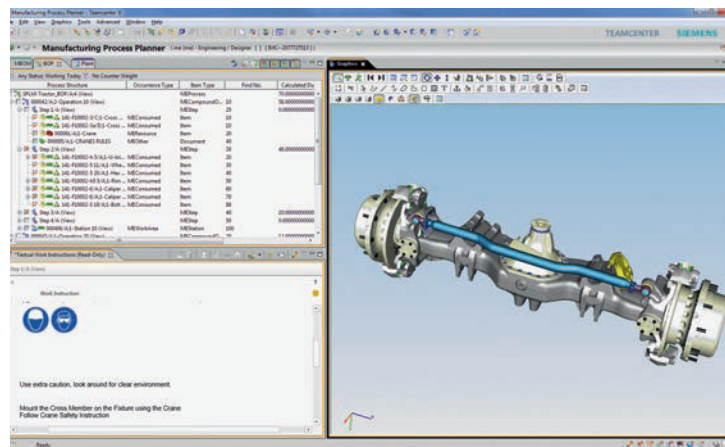
Benefits

- Provides easy-to-use, intuitive, web-based interaction
- Enables quick rendering and presentation of animated 3D data
- Provides complete paperless solution to manage manufacturing work instructions
- Includes full traceability of process changes ensuring up-to-date work instructions
- Facilitates access to work instruction on-demand
- Powers two-way collaboration between planners and the shop floor
- Provides a lightweight, easy to deploy and low maintenance application

Summary

The Teamcenter® software electronic work instruction (EWI) solution is an HTML5-compliant web-based application that helps you communicate all manufacturing process information, including process steps, 2D/3D visuals, markups, standard texts and PMI information to the shop floor. This solution helps ensure manufacturing work

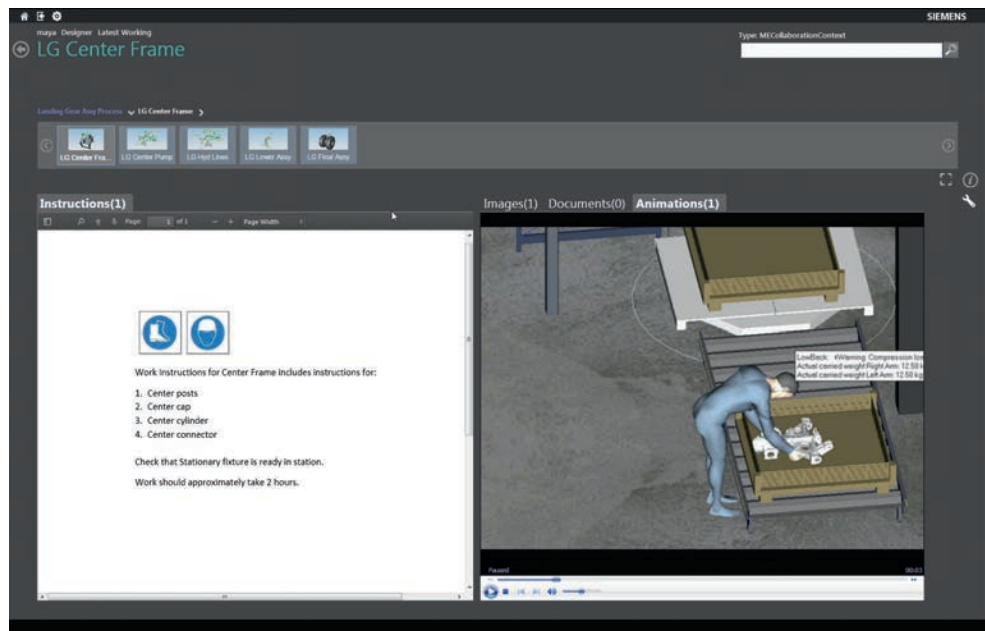
instructions are always current, and accurate process steps are presented to users at all times. Shop floor users can communicate back to the planners any issues that prevent instructions from being followed. Such two-way collaboration between manufacturing planners and shop floor workers can improve efficiency, preventing rework and scrap.



Teamcenter Electronic Work instructions

Features

- Embedded 3D data, texts, images and movies for richer communication
- Web-based and HTML5-compliant
- Accessible from ERP and MES applications
- Integrated with Cortona3D for presenting animated 3D work instructions
- Works on all major browsers and mobile tablets

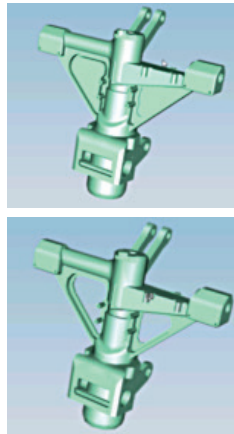
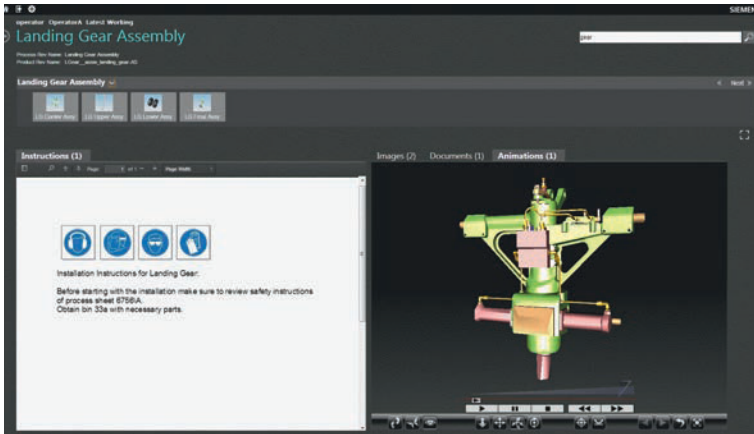


The EWI solution provides clear information about which parts and tools to use, reference documents, manufacturing instructions and more. It can also be integrated with the manufacturing execution system (MES) interface, enabling shop floor workers to access work instruction directly from the MES. The web interface is intuitive, making it easy to learn and use EWI with minimal training.

Capture shop floor work instructions data directly from Teamcenter

With EWI, you can be confident that work instructions are always current and up to date. The work instructions are captured directly from your Teamcenter database and presented on a web browser. This ensures that product design and manufacturing data are interconnected, so shop floor employees always access the latest documents. Now, work instructions are just a click away and always available on-demand.

Web-based, easy-to-use and lightweight
EWI is intuitive, highly visual and web optimized. Shop floor workers can learn to use the user interface without training. This solution eliminates the need for printed documents that often contribute to – rather than reduce – errors. EWI enables you to use lightweight files that make it quick and easy to render and display work instructions documents. Instructions also can be accessed and displayed using a mobile tablet to make information conveniently accessible on the shop floor. Work instructions also can be accessed directly from MES terminals. Because it is completely web-based, EWI eliminates end-user installation and support costs, making it more suitable for more complex global deployments.



Process steps update automatically based on change requests
 You can now propagate updates to process instructions based on Teamcenter change management workflow. This connection between EWI and the Teamcenter data allows assembly steps to get seamlessly updated to reflect latest changes. This ensures the shop floor can quickly respond to any product and manufacturing updates.



844-GEO-SUPT
 support@geoplms.com
 geoplms.com

Contact
 Siemens Industry Software
 Americas +1 314-264-8499
 Europe +44 (0) 1276 413200
 Asia-Pacific +852 2230 3308

www.siemens.com/plm

© 2013 Siemens Product Lifecycle Management Software Inc. Siemens and the Siemens logo are registered trademarks of Siemens AG. D-Cubed, Femap, Geolus, GO PLM, I-deas, Insight, JT, NX, Parasolid, Solid Edge, Teamcenter, Tecnomatix and Velocity Series are trademarks or registered trademarks of Siemens Product Lifecycle Management Software Inc. or its subsidiaries in the United States and in other countries. All other logos, trademarks, registered trademarks or service marks used herein are the property of their respective holders.

Y6 34286 5/13 C