



Siemens PLM Software

# Test Manager

Streamline production with virtual assembly tests prior to the first physical build

## Benefits

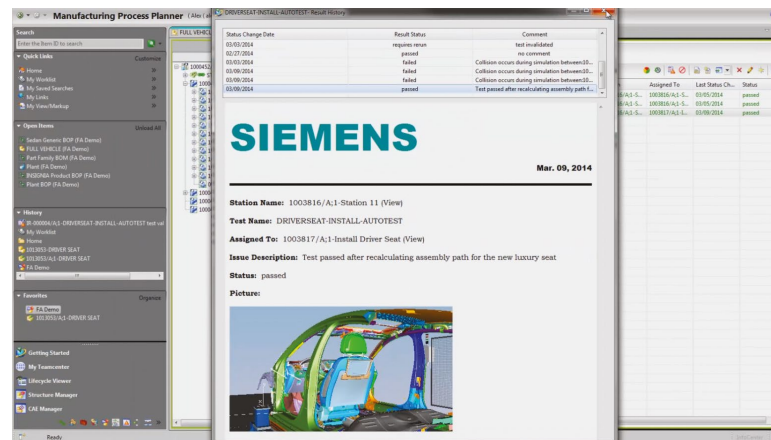
- Reduce launch issues and quality escapes by virtually assessing the product buildup early in the program
- Reduce costs associated with physical prototypes, part changes and tool rework
- Minimize virtual assessment and reduce the number of repeated tests by leveraging templates and best practices
- Capture and re-use assembly knowledge for better collaboration between departments

## Summary

It is a key priority for manufacturers to ensure predictive program launches and right-first-time production builds. Companies can significantly reduce launch issues by virtually assessing product build early in a new program well before physical prototypes are used.

Test Manager, based on Teamcenter® Manufacturing software, can be used to support the verification process by providing a straightforward way to plan, manage and execute digital pre-assembly validation tests. It ensures right-first-time production and enables you to avoid rework by virtually assessing potential issues prior to the first physical build.

Planners and designers define test scenarios and associate them to the process, product and plant information.



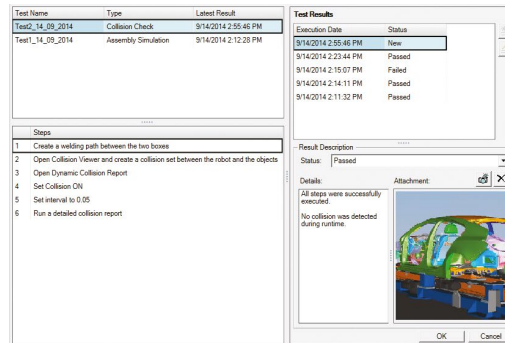
Simulation and validation engineers can execute predefined test scenarios by using 3D validation tools such as Teamcenter Visualization, NX™ software and Tecnomatix® Process Simulate software, and log those tests in order to initiate issue and problem reports based on the results, as required.

Shop floor operators can leverage the Teamcenter Electronic Work Instructions

# Test Manager

## Features

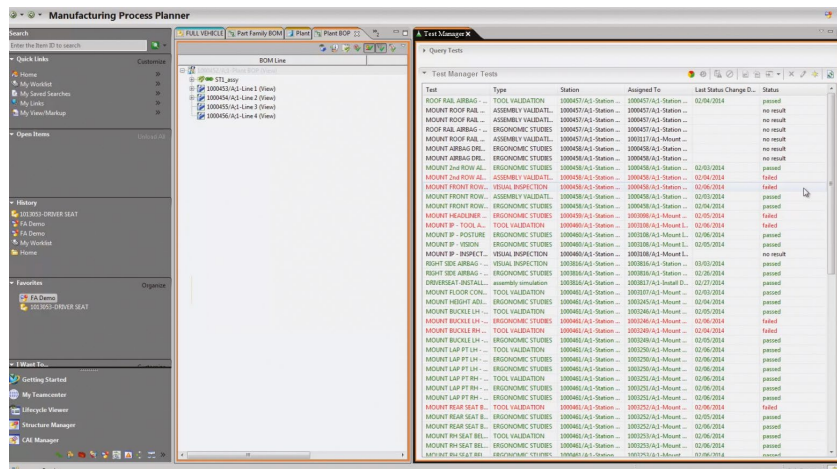
- Define and re-use test scenarios for products, processes and plants
- Identify tests by product configuration, variant and validity
- Provide status reports per model or configuration
- Conduct impact analyses to find affected tests by product, process or resource change
- Integrated with Teamcenter requirements, change management and workflow
- Open and track test issues with Teamcenter issue management and CAPA integration
- Color coded indication for easy identification of pass, fail and rework test results



solution to access test scenarios at the production facility. With Test Manager, you can:

- **Search and review test lists of products or processes:** the test list can be filtered by test name (partial or full name), date or referenced part, as well as any combination of these criteria
- **Create or modify a test:** the user can create new tests or modify existing tests for products and processes. Tests can be defined to assess assembly, ergonomics, safety and more. The test content can be chosen from a list of templates or can be typed in manually
- **Run and rerun tests for validation:** the tests can be validated with Siemens PLM Software products based on their content

- **Integrate with issue management:** if a test fails, the user can create an issue in Test Manager and it will be reflected in Teamcenter issue management
- **Test Manager reports:** in Test Manager, you can get a status report with a history log, including dates, results and comments for every test
- **Test dashboard:** it is possible to show statistical results for specific search criteria. The result can be shown for the current or previous test date



Contact  
Siemens PLM Software  
Americas +1 314 264 8499  
Europe +44 (0) 1276 413200  
Asia-Pacific +852 2230 3308

[www.siemens.com/plm](http://www.siemens.com/plm)

© 2014 Siemens Product Lifecycle Management Software Inc. Siemens and the Siemens logo are registered trademarks of Siemens AG. D-Cubed, Femap, Fibersim, Geolus, GO PLM, I-deas, JT, NX, Parasolid, Solid Edge, Syncrofit, Teamcenter and Tecnomatix are trademarks or registered trademarks of Siemens Product Lifecycle Management Software Inc. or its subsidiaries in the United States and in other countries. All other logos, trademarks, registered trademarks or service marks belong to their respective holders.

42853-Y6 10/14 B