



**SIEMENS**

*Ingenuity for life*



**GEOMETRIC  
SOLUTIONS**

# Teamcenter Integration for AutoCAD Electrical

## Capture, manage and share AutoCAD Electrical data to improve collaboration and overall business performance

### Benefits

- Integrate AutoCAD Electrical files and projects with other design data to provide a single source of product and process information to support your complete design-through-manufacturing process
- Easily find correct revisions of AutoCAD Electrical data
- Accelerate product change and approval processes to reduce time-to-market
- Follow consistent work processes across all data formats, resulting in fewer errors and less rework
- Improve collaboration within your organization and with customers and suppliers
- Fully integrated with Active Workspace for seamless interaction with Teamcenter
- Graphical browser-based user interface for convenient access to Teamcenter

### Summary

Teamcenter® software's integration for AutoCAD® Electrical enables you to reduce your product development cycle times and costs by enhancing your AutoCAD Electrical environment through integration with Teamcenter, the industry-leading product lifecycle management (PLM) solution. Providing a single source of product data for your design and manufacturing teams, the integration provides access to a full range of PLM capabilities to further optimize your design-through-manufacturing processes.

### Streamline product development

The Teamcenter integration for AutoCAD Electrical enables design information created in AutoCAD Electrical to be captured, controlled and shared by your organization in a highly secure PLM environment with version management and access controls to ensure that the right people get the right information at the right time.

Providing a single source of product and process data, the capabilities go beyond workgroup CAD data management. The integration is optimized for scalability across a wide area network, enabling geographically distributed design centers to connect to a single database and volume server.

Using this integration, design teams can quickly search and access AutoCAD drawings, projects, and related data to eliminate time wasted trying to find and share design information. The integration also enables your organization to eliminate unnecessary change orders by working from the latest design information.

The Teamcenter integration for AutoCAD Electrical is a design-centric solution that leverages existing Teamcenter rules while enabling AutoCAD Electrical data to be incorporated into a multi-CAD environment.

### Extend the value of AutoCAD with Teamcenter Rapid Start and Active Workspace

New Teamcenter customers who want to get up and running quickly can choose the Teamcenter Rapid Start deployment option for Teamcenter, which delivers a preconfigured product data management (PDM) environment that is focused on managing everyday tasks and processes for product development. Preconfigured industry best-practice workflows including design release and engineering change confirm that processes are completed consistently and efficiently.

# Teamcenter Integration for AutoCAD Electrical

## Benefits *continued*

- Fully integrated with AutoCAD Electrical client enables designers to focus on design rather than design management
- Identical user interface and experience with AutoCAD and Inventor® integrations, minimizing training needs

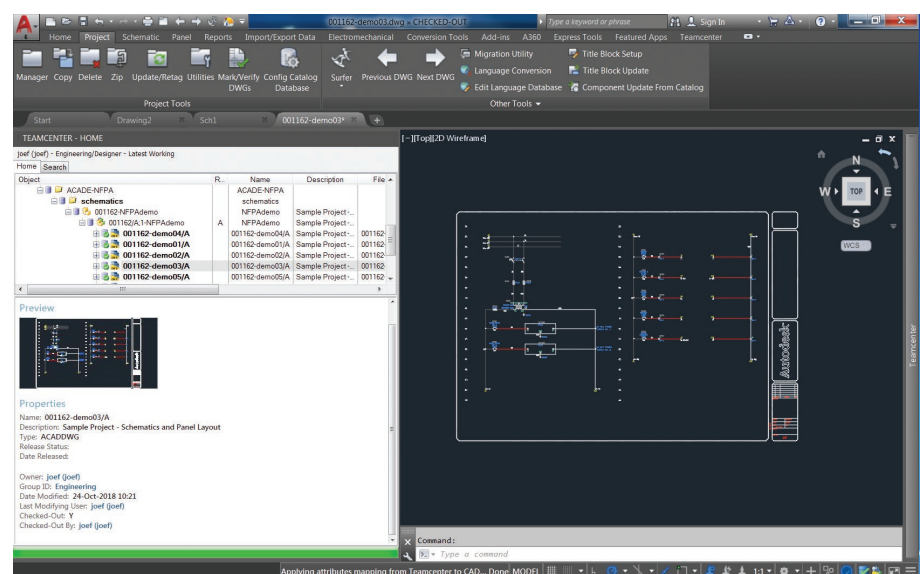
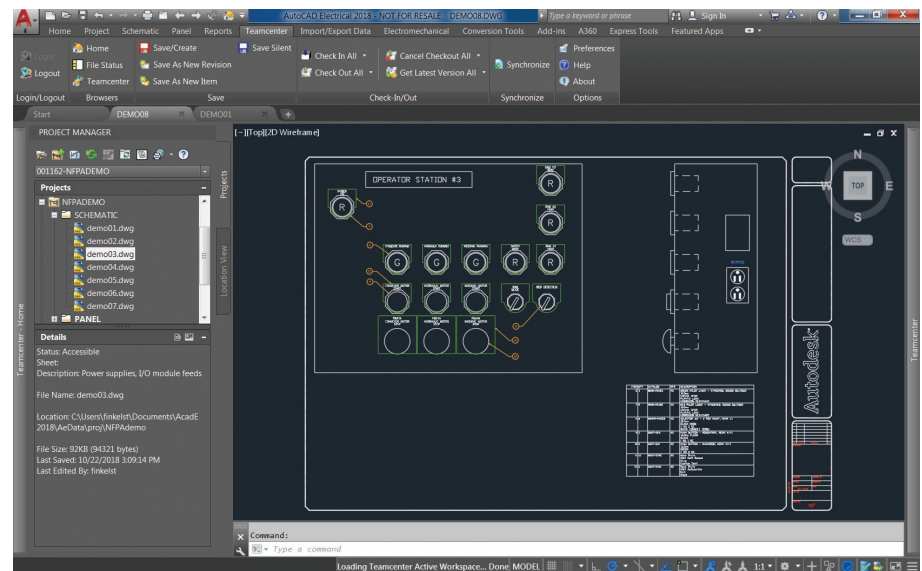
## Features

- Access Teamcenter and Teamcenter Rapid Start PLM capabilities directly from within AutoCAD Electrical
- Active Workspace provides intuitive access to a full range of product lifecycle management functionality
- Create and edit AutoCAD Electrical drawings and projects under Teamcenter control
- Manage entire AutoCAD Electrical projects as single revision, or unique revision per each project drawing
- Bi-directionally transfer drawing title block text and properties to/from Teamcenter
- Automatically create neutral file output, including schematic PDF, for downstream consumers with no access to AutoCAD Electrical

Active Workspace is a simple and intuitive user interface for Teamcenter that enables AutoCAD Electrical designers to work efficiently and effectively in a collaborative environment. The PDM environment can be extended to include non-CAD users through Active Workspace's browser-based user interface or integration with Microsoft Outlook.

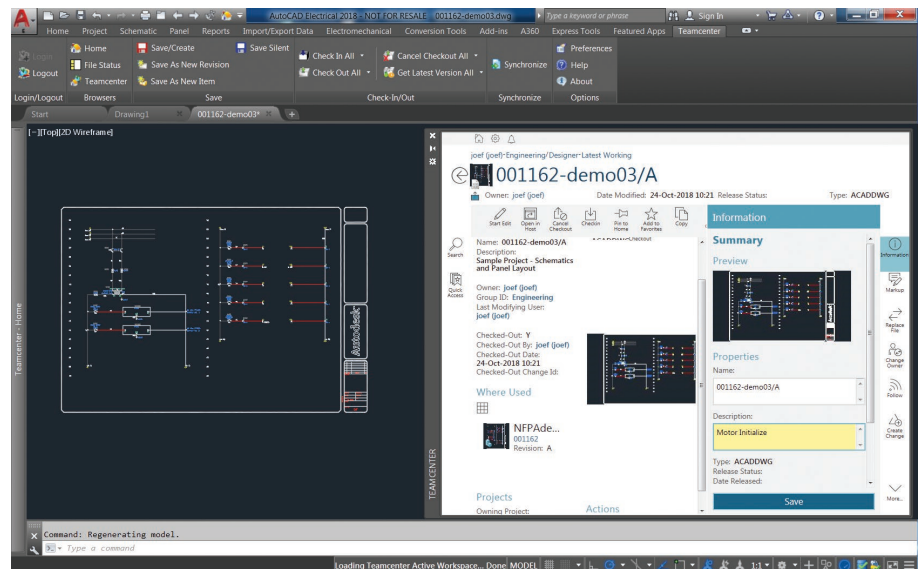
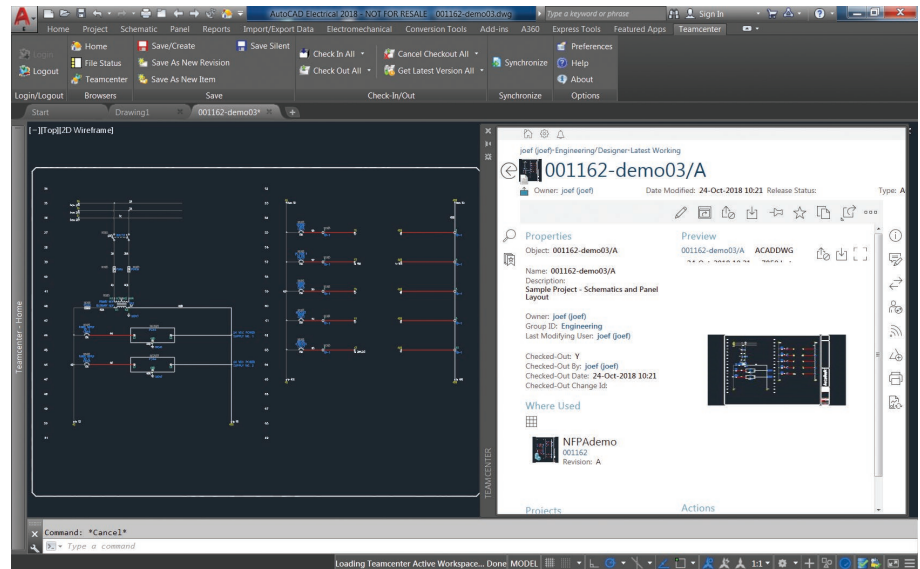
## Supported AutoCAD Electrical documents

- Drawings (DWG)
- Xrefs and blocks
- Overlays
- DXF
- DWF and DWFx
- AutoCAD Electrical Project files (WDP)
- PDF



## Supported functions

- Control versions, revisions of AutoCAD Electrical projects and drawings
- Access Teamcenter from within AutoCAD Electrical using CAD-centric user interface or fully integrated Active Workspace
- Access core data management tasks such as search, open, revise, check-in, check-out, all within AutoCAD Electrical
- Access advanced PLM functionality using Active Workspace including workflow assignment and status, change management, impact analysis and more
- Save new AutoCAD Electrical drawings and projects under Teamcenter using Teamcenter business object rules to assign ID, revision and name
- Automatically create schematic PDF and other project documentation

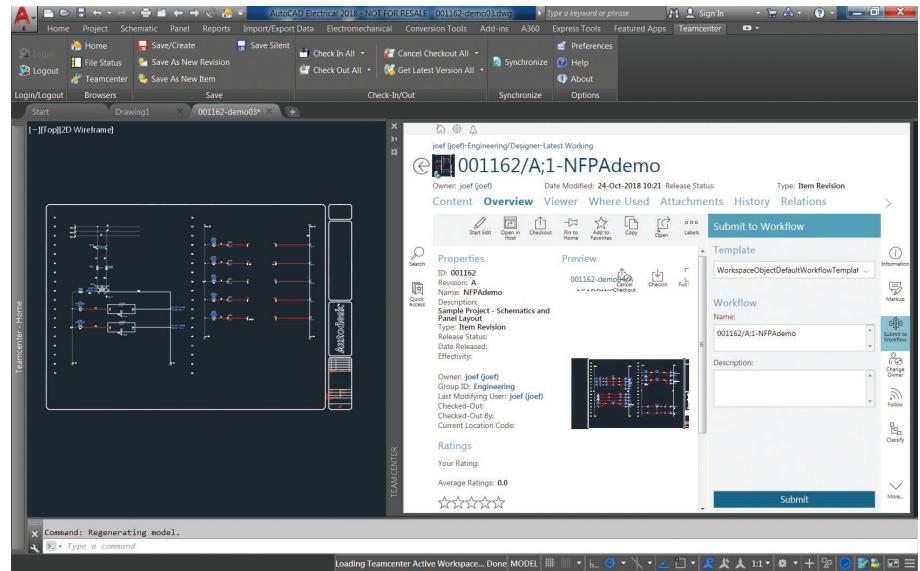


### Teamcenter advantage

The AutoCAD Electrical integration is supported by both Teamcenter and Teamcenter Rapid Start which power innovation and productivity by connecting people and processes with knowledge.

Teamcenter is the most widely used PLM system, which is backed by Siemens PLM Software's leadership in installation, service and support. Users of Teamcenter can easily expand the scope of their PLM implementation by taking advantage of a comprehensive portfolio of applications as well as its proven scalability in terms of performance and global implementation.

Teamcenter Rapid Start is a preconfigured deployment option for Teamcenter that manages design data as well as everyday tasks and processes, providing an ideal entry point into the Teamcenter product line for small and medium-sized businesses.



Siemens PLM Software  
[www.siemens.com/plm](http://www.siemens.com/plm)

Americas +1 314 264 8499  
 Europe +44 (0) 1276 413200  
 Asia-Pacific +852 2230 3333



844-GEO-SUPT  
[support@geoplms.com](mailto:support@geoplms.com)  
[geoplms.com](http://geoplms.com)

© 2018 Siemens Product Lifecycle Management Software Inc. Siemens, the Siemens logo and SIMATIC IT are registered trademarks of Siemens AG. Camstar, D-Cubed, Femap, Fibersim, Geolus, GO PLM, I-deas, JT, NX, Parasolid, Solid Edge, Syncrofit, Teamcenter and Tecnomatix are trademarks or registered trademarks of Siemens Product Lifecycle Management Software Inc. or its subsidiaries in the United States and in other countries. Simcenter is a trademark or registered trademark of Siemens Industry Software NV or its affiliates. All other trademarks, registered trademarks or service marks belong to their respective holders.  
 75878-A3 11/18 C