

SIEMENS

Ingenuity for life



GEOMETRIC SOLUTIONS

Teamcenter Integration for SolidWorks (Enterprise Edition)

Manage, share and re-use SolidWorks data to improve collaboration and overall business performance

Benefits

- Integrate SolidWorks files with all of your technical data to provide a single source of product data that supports your complete design-through-manufacturing process
- Reduce time finding the correct revisions of SolidWorks data
- Accelerate product change and approval processes for reduced time-to-market
- Follow consistent work processes across all data formats, resulting in fewer errors and less rework
- Improve collaboration within your organization and with customers and suppliers

Summary

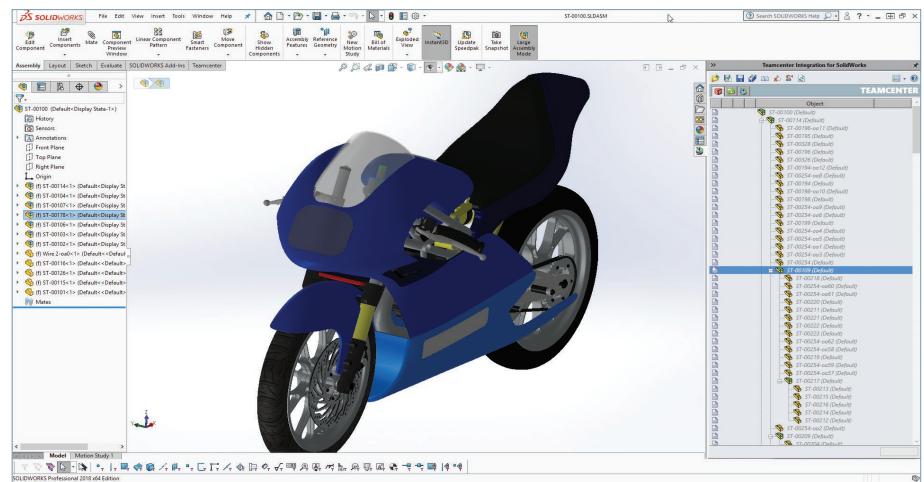
Teamcenter® software's integration for SolidWorks® (Enterprise Edition) helps reduce your product development cycle times and cost by enhancing your SolidWorks environment to deliver a single source of product data for your design and manufacturing teams. The integration provides access to a full range of product lifecycle management (PLM) capabilities to further optimize

your design-through-manufacturing processes.

Streamlined product development

Teamcenter integration for SolidWorks goes beyond workgroup CAD data management, enabling design and manufacturing teams to work closely together to streamline product development processes by providing a single source of product data. It is optimized for scalability across a wide area network, enabling geographically distributed design centers to connect to a single database and volume server.

All design information created using SolidWorks is captured, controlled and shared by your engineering teams in a single highly secure Teamcenter environment with version management and access controls to make certain that the right people get the right information at the right time.

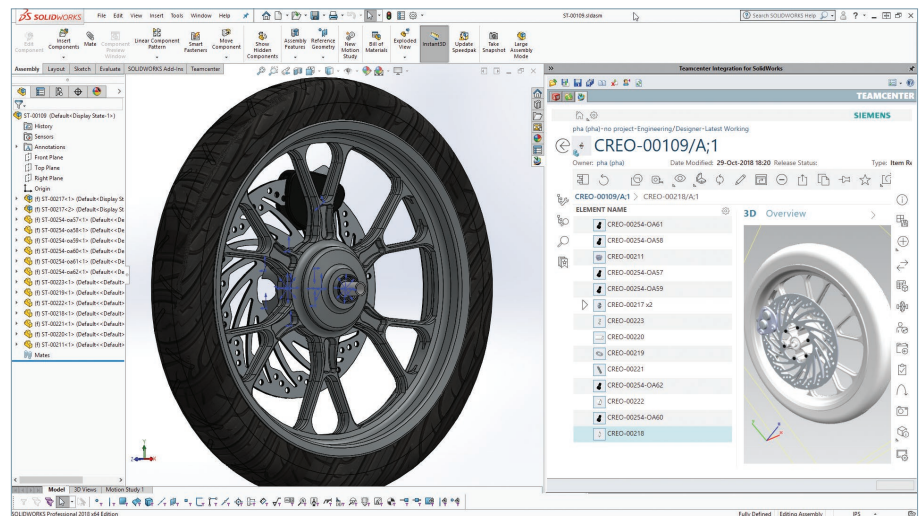


The CAD-centric user interface helps simplify and improve the user experience.

Teamcenter integration for SolidWorks (Enterprise Edition)

Features

- Use Teamcenter management functions available from the SolidWorks integration
- Re-use design data authored and updated in different mechanical CAD tools
- Perform assembly layout or editing in PLM, then load into SolidWorks
- Fully or partially clone SolidWorks assemblies, including drawings
- Create assembly transformations supporting digital mockup
- Generate drawing title blocks using Teamcenter attributes
- Support SolidWorks configurations and design tables
- Manage Toolbox parts in Teamcenter while allowing Toolbox to retain ownership of the CAD models themselves
- Save auxiliary files created using SolidWorks (DXF, PDF)
- Create and vault DirectModel (JT™ data format) files for digital mockup
- Conform with Teamcenter policies, including security and data access
- Perform on-demand access to the user's Teamcenter workspace



Active Workspace provides intuitive access to a full range of PLM functionality.

SolidWorks design teams can use the integration to quickly search for SolidWorks parts, assemblies and drawings. The integration enables users to save time needed to find and share design data distributed between diverse design teams and their suppliers. Because everyone is working from the latest design information, it also eliminates unnecessary change orders.

Enterprise edition enables PLM product configuration

Unique to the enterprise level of SolidWorks integration, you can define assembly product structure in Teamcenter, then load the structure into SolidWorks for detailed design. This close MCAD-PLM integration can help you keep up with the increasing demand for engineer-to-order products.

Extend the value of SolidWorks with Teamcenter Rapid Start and Active Workspace

New Teamcenter customers who want to get up and running quickly can choose the Teamcenter Rapid Start deployment option for Teamcenter, which delivers a preconfigured product data management (PDM) environment that is focused on managing everyday

tasks and processes for product development. With preconfigured industry best-practice workflows including design release and engineering, you can complete processes consistently and efficiently.

Active Workspace is a simple and intuitive user interface for Teamcenter that enables SolidWorks designers to work efficiently and effectively in a collaborative environment. The PDM environment can be extended to include non-CAD users through the Active Workspace browser-based user interface or integration with Microsoft Outlook.

Multi-CAD collaboration

Teamcenter multi-CAD support enables design teams to create and modify component designs on any major CAD system and assemble their innovations/modifications into a multi-CAD product design. Teamcenter synchronizes product information to ensure that all teams are working from the latest designs, while automatically managing both native and neutral CAD representations to eliminate delays caused by constant data translations. The innovative Teamcenter approach to multi-CAD collaboration enables your extended

enterprise to leverage other CAD investments in addition to SolidWorks.

Engineering process management

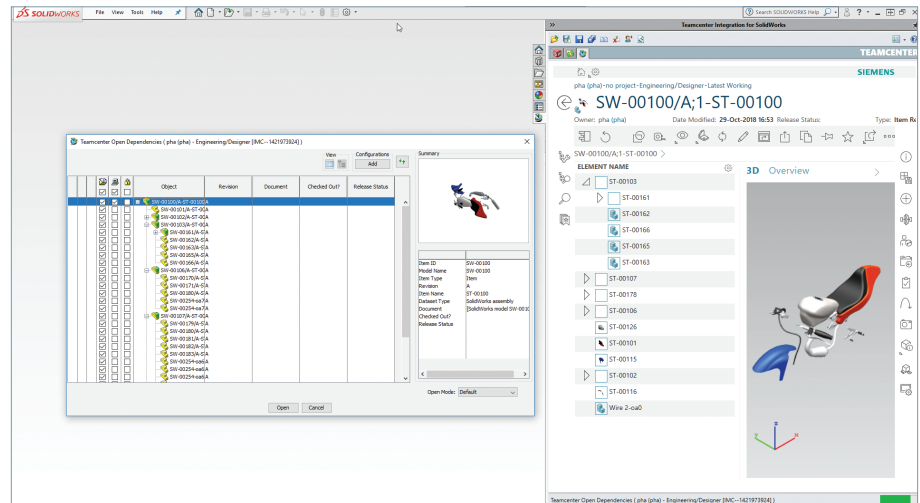
Teamcenter engineering process management capabilities surpass those of traditional CAD file management by capturing all relevant product and process information and relating these assets to a common product structure. In addition to managing all of your related CAD, CAM and CAE information, Teamcenter can manage design specifications, documents, requirements and other types of product information. Teamcenter process management capabilities enable you to define design-through-manufacturing workflows, allowing you to efficiently manage and execute changes and enforce company-specific business rules.

Supported SolidWorks objects

- Parts
- Assemblies
- Drawings
- Toolbox parts

Supported functions

- Access all commonly-used Teamcenter functions from a convenient task panel
- See the Teamcenter status of your local models at a glance
- Selectively update in-session models to later versions or revisions without reloading your assembly
- Directly insert and update parts and assemblies from other mechanical CAD tools
- Clone SolidWorks assemblies, either fully or partially, with their drawings
- Automatically translate and save any derived file type that can be exported from SolidWorks, including JT, PDF, STEP, and many more
- Define or modify assembly product structure in PLM, then load in SolidWorks



- Save SolidWorks design tables or configurations as Teamcenter items
- Check-out and check-in objects to Teamcenter
- Perform bi-directional attribute mapping and synchronization
- Manage supplier data with bulk import and export tools
- Display Teamcenter find numbers in SolidWorks drawing annotations
- Bulk import and export for supplier data exchange

Teamcenter advantage

SolidWorks integration is supported by both Teamcenter and Teamcenter Rapid Start, which power innovation and productivity by connecting people and processes with knowledge.

Teamcenter is the most widely used PLM system, which is backed by Siemens PLM Software's leadership in delivery. Users of Teamcenter can easily expand the scope of their PLM implementation by taking advantage of a comprehensive portfolio of applications as well as its proven scalability in terms of performance and global implementation.

Siemens PLM Software
www.siemens.com/plm

Americas +1 314 264 8499
 Europe +44 (0) 1276 413200
 Asia-Pacific +852 2230 3333

©2018 Siemens Product Lifecycle Management Software Inc. Siemens, the Siemens logo and SIMATIC IT are registered trademarks of Siemens AG. Camstar, D-Cubed, Femap, Fibersim, Geolus, GO PLM, I-deas, JT, NX, Parasolid, Solid Edge, Syncrofit, Teamcenter and Tecnomatix are trademarks or registered trademarks of Siemens Product Lifecycle Management Software Inc. or its subsidiaries in the United States and in other countries. Simcenter is a trademark or registered trademark of Siemens Industry Software NV or its affiliates. All other trademarks, registered trademarks or service marks belong to their respective holders.
 75877-A2 11/18 C



844-GEO-SUPT
support@geoplms.com
geoplms.com