



SIEMENS

Siemens PLM Software

Teamcenter integration for CATIA V5

Reducing costs and development time by enhancing PLM data management

Benefits

- Reduce costs and development cycle time by facilitating collaboration in your CATIA environment
- Enable your technical staff to spend less time trying to find the correct revisions to CATIA data
- Facilitate consistent work processes followed across all data formats
- Develop faster product change and approval processes resulting in decreased time-to-market

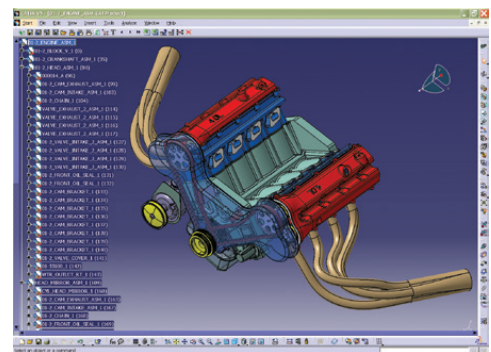
Summary

The Teamcenter® software integration for CATIA V5 allows you to reduce your product development cycle times and cost by enhancing your CATIA V5 environment to support best-in-class collaboration within your organization, as well as with customers and suppliers. The integration provides access to a full range of product lifecycle management (PLM) capabilities to further optimize your design-through-manufacturing processes.

Capture, manage and share CATIA V5 data

The Teamcenter integration for CATIA V5 enables all the design information created in CATIA V5 to be captured, controlled and shared by your organization in a single,

highly secure PLM environment that includes version management and access controls to ensure that the right people get the right information at the right time.



www.siemens.com/teamcenter

Teamcenter integration for CATIA V5

Benefits *continued*

- Enable the integration of CATIA files with all technical data to provide a single source of product information that supports the complete design-through-manufacturing process

Features

- Use Teamcenter PLM functions available on the CATIA V5 interface
- Create and edit CATIA V5 models, drawings and assembly relationships
- Perform partial load and load merge for efficient assembly management
- Create new product revisions or version updates for work in progress
- Generate drawing title blocks using Teamcenter attributes
- Manage mechanical properties of CATIA models and assemblies
- Provide on-demand access to the user's Teamcenter workplace
- Store, load and migrate CATIA V4 data to V5

Using the CATIA integration, design teams can quickly search for CATIA parts, assemblies and drawings. The integration enables users to reduce the amount of time they spend trying to find and share design information, as well as eliminate unnecessary change orders by ensuring that everyone is working with the latest design information.

Optimized for scalability across a wide-area network (WAN), Teamcenter capabilities go beyond workgroup computer-aided design (CAD) data management, enabling design teams at different locations and throughout your supply chain to work closely to streamline the product development process through multi-site collaboration.

Extend the value of CATIA V5 with Teamcenter

Everyday task and process management

Teamcenter enables you to manage the everyday tasks and processes needed to optimize your design-through-manufacturing environment. Best practice industry workflows for product releases and engineering changes are included to ensure that these processes are conducted consistently and efficiently.

Multi-CAD collaboration

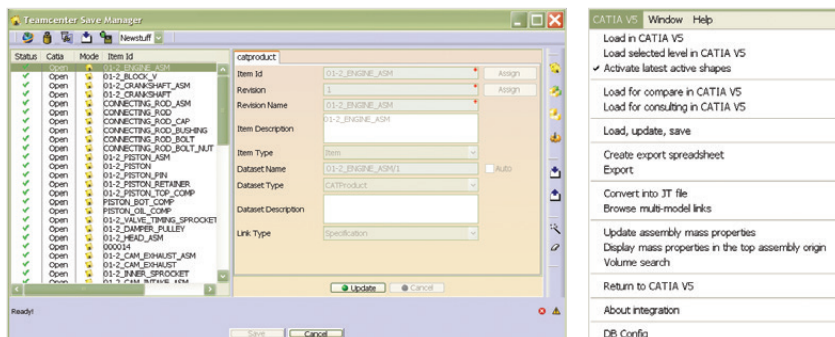
Teamcenter support for multi-CAD deployments enables design teams to create and modify component designs on any major CAD system, and assemble their innovations into a multi-CAD product design. Teamcenter can be used to synchronize product information to ensure that everyone is working from the latest designs while automatically managing both native and neutral CAD representations.

Supported CATIA types

- Models
- CATParts
- CATProducts
- CATAnalysis, CATProcess, CATShape, CGR
- CATDrawings

Supported functions

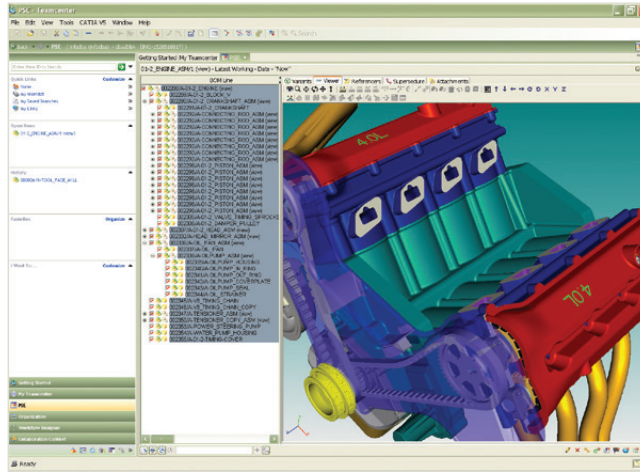
- Load – incorporate new design data or merge design data with existing data to create an assembly
- Save – store data as a new revision, version, assembly or individual item
- Property mapping and title block synchronization using Teamcenter database attributes
- Perform proximity search for selective/partial product structure load
- Preserve and navigate multi-model links
- Create, configure and edit assemblies using Teamcenter and/or CATIA V5
- Automatically generate and vault lightweight visualization using the JT™ data format files for digital mockup
- Save mechanical properties, including volume, weight, surface area and moments of inertia
- Store, load and migrate CATIA V4 data to V5
- Management of lightweight CATIA cache files
- Management of multiple CATIA environments
- Expose flexible assemblies, scenes, representations and hide/show mapped with Teamcenter



Teamcenter advantage

The CATIA V5 integration is supported by both Teamcenter and Teamcenter Rapid Start, which power innovation and productivity by connecting people and processes with knowledge.

- Teamcenter is the de facto standard for PLM deployments and is backed by Siemens PLM Software's leadership in installation, service and support. Users of Teamcenter can easily expand the scope of their PLM implementation by taking advantage of a comprehensive portfolio of applications as well as its proven scalability in terms of performance and global implementation
- Teamcenter Rapid Start is a preconfigured deployment option for Teamcenter that is used to manage design data as well as everyday tasks and processes, providing an ideal entry point into the Teamcenter product line for small and medium-sized businesses



Contact

Siemens PLM Software
 Americas +1 314 264 8499
 Europe +44 (0) 1276 413200
 Asia-Pacific +852 2230 3308

www.siemens.com/plm

© 2014 Siemens Product Lifecycle Management Software Inc. Siemens and the Siemens logo are registered trademarks of Siemens AG. D-Cubed, Femap, Fibersim, Geolus, GO PLM, I-deas, JT, NX, Parasolid, Solid Edge, Syncrofit, Teamcenter and Tecnomatix are trademarks or registered trademarks of Siemens Product Lifecycle Management Software Inc. or its subsidiaries in the United States and in other countries. All other logos, trademarks, registered trademarks or service marks used herein are the property of their respective holders.

14925-X9 12/14 H