



SIEMENS



Answers for industry.

Teamcenter integration for Intercept Pantheon and Mozaix

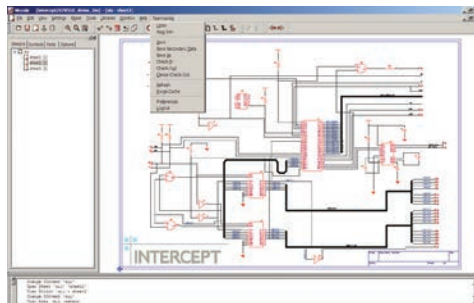
Integrating Pantheon printed circuit board design into your
Teamcenter PLM environment

Benefits

- Manages entire PCB product lifecycle
- Provides a single source of product and process data
- Fosters environmental compliance initiatives
- Facilitates collaboration and concurrent engineering initiatives
- Aligns ECAD design with product requirements

Summary

Teamcenter® software's integration for Intercept's Mozaix schematic editor and Pantheon PCB design system enables users to capture and manage their schematic, printed circuit board (PCB) layout, bill of material (BOM), fabrication and assembly data in Teamcenter – the world's most widely used product lifecycle management (PLM) system.



Managing the electronics product lifecycle

Teamcenter integration for Intercept Mozaix and Pantheon provides a comprehensive solution for the entire electronics product lifecycle that extends from initial inception through creation, analysis, manufacturing, service and end-of-life disposition. The integration enables users to store and manage all of their PCB design, collaboration and manufacturing data in Teamcenter – Siemens PLM Software's digital PLM platform.

Teamcenter menus, which are embedded in the user interfaces of Mozaix and Pantheon, allow the user to login to Teamcenter and open, save, check-in and check-out design data. Adhering to the Teamcenter mechatronics data model, design teams are assured their ECAD data is accurately captured and consistently managed in the Teamcenter environment in sync with other product definition data.

Teamcenter integration for Intercept Pantheon and Mozaix

Business challenges

- Integrating ECAD process into product development process
- Managing ECAD data in the context of the overall product configuration
- Verifying environmental compliance
- Coordinating ECAD/MCAD collaboration
- Establishing communication within and across a multi-site supply chain
- Ensuring that ECAD design implementation meets customer requirements

Features

- Store, access and manage Pantheon and Mozaix objects (such as schematic, layout, BOM) as items in Teamcenter
- Create new product revisions or version updates for work in progress
- Establish security and data access control policies in Teamcenter
- Establish relationships between Teamcenter objects and engineering BOMs
- Associate and trace product requirements to PCB designs

Providing a single source of product and process knowledge

Teamcenter Mozaix and Pantheon integration enables users to access, manage and archive PCB design data in a single secure location. On an enterprise level, the integration allows widely dispersed PCB design teams to manage released design data, collaborate and execute design changes across the entire product lifecycle, thereby minimizing change-related rework.

At the user level, the Teamcenter integration supports the ability to open and save native design files, collaborate with mechanical engineers, share fabrication and assembly data with suppliers and create BOMs containing both mechanical and electrical parts. To reduce interpretation errors, BOM data can be displayed as “packed” or “unpacked” while Teamcenter compare capabilities can be used to quickly identify any differences between BOM revisions.

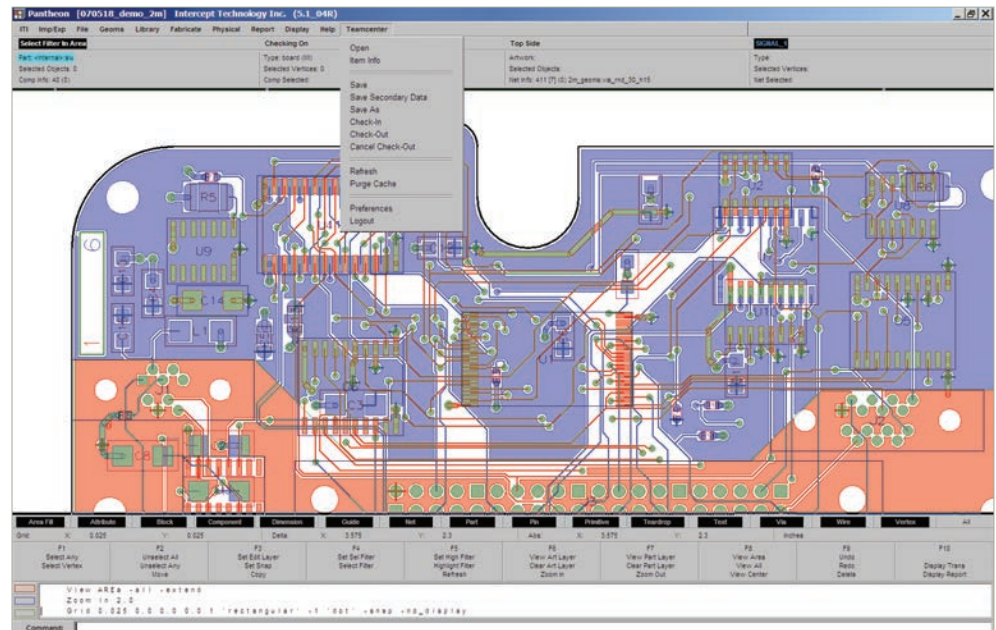
When ECAD design procedures are brought under Teamcenter control, they can be incorporated into structured workflows and

effective change management processes. By managing data in Teamcenter, product manufacturers can identify, access and manage the creation, modification and release process of their most critical ECAD data.

Facilitating collaboration and concurrent engineering

To facilitate the flow of accurate design data across multiple domains, the Teamcenter integration leverages PCB design and MCAD interchange files that facilitate the exchange of data, such as board outlines, fixed component placements, keep-out areas and other placement restrictions.

Electrical engineers can pass this information as 2.5D/3D elements to mechanical engineers to simulate and analyze various conditions, including interferences, thermal, vibration, shock, dust and humidity. Sharing data for this type of cross domain analysis helps improve quality and increase product reliability.



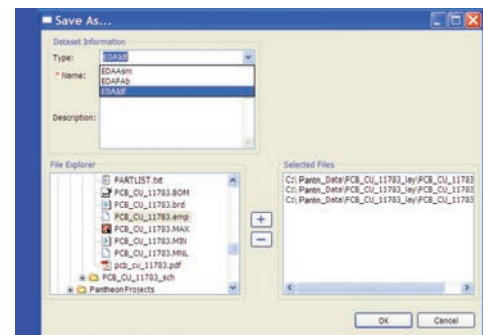
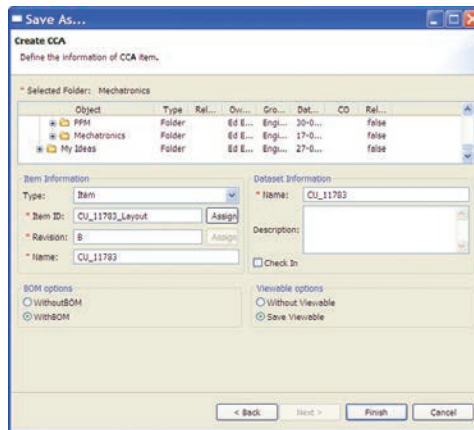
Complete requirements management and traceability

Teamcenter Pantheon and Mozaix integration enables users to leverage Teamcenter powerful requirements management capabilities. PCB hardware and software functions can be associated with specific design requirements, providing complete requirements traceability throughout the entire PCB lifecycle.

Supported objects

Teamcenter integration with Intercept Pantheon and Mozaix supports:

- Circuit card assembly (CCA) information
- Components on a CCA (BOM)
- Schematic design data
- Layout design data
- Secondary data (fabrication and assembly)
- MCAD and analysis interchange files
- Layout files in native tool ASCII file format
- Schematic files in native tool ASCII file format



Contact

Siemens Industry Software
 Americas +1 314-264-8499
 Europe +44 (0) 1276 413200
 Asia-Pacific +852 2230 3308

www.siemens.com/plm

© 2013 Siemens Product Lifecycle Management Software Inc. Siemens and the Siemens logo are registered trademarks of Siemens AG. D-Cubed, Femap, Geolus, GO PLM, I-deas, Insight, JT, NX, Parasolid, Solid Edge, Teamcenter, Tecnomatix and Velocity Series are trademarks or registered trademarks of Siemens Product Lifecycle Management Software Inc. or its subsidiaries in the United States and in other countries. All other logos, trademarks, registered trademarks or service marks used herein are the property of their respective holders.

Y3 20798 5/13 C



844-GEO-SUPT
 support@geoplms.com
 geoplms.com