

Siemens PLM Software

Teamcenter integration for Inventor

Capture, manage and share Inventor data using Teamcenter – the de facto standard for PLM deployments

Benefits

- Ability to integrate Inventor files with all of your technical data to provide a single source of product information that supports your complete design-through-manufacturing process
- Less time spent finding correct revisions of Inventor data
- Faster product change and approval processes resulting in decreased time-to-market
- Consistent work processes followed across all data formats, resulting in less errors and rework

Summary

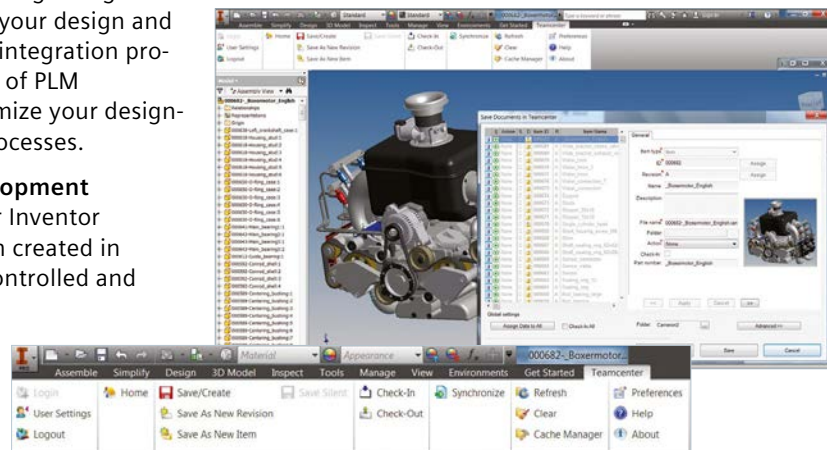
Teamcenter® software's integration for Inventor enables you to reduce your product development cycle times and costs by enhancing your Inventor environment through integration with Teamcenter, the industry-leading product lifecycle management (PLM) solution. Providing a single source of product data for your design and manufacturing teams, the integration provides access to a full range of PLM capabilities to further optimize your design-through-manufacturing processes.

Streamline product development

Teamcenter integration for Inventor enables design information created in Inventor to be captured, controlled and shared by your organization in a single, highly secure PLM environment with version management and access

controls to ensure that the right people get the right information at the right time.

Providing a single source of product and process data, the capabilities go beyond workgroup CAD data management. The integration is optimized for scalability



Teamcenter integration for Inventor

Benefits *continued*

- Improved collaboration within your organization and with customers and suppliers
- Teamcenter home browser available directly inside of Inventor to facilitate ease of use

across a wide area network, enabling geographically distributed design centers to connect to a single database and volume server.

Using this integration, design teams can quickly search and access Inventor parts, assemblies and drawings to eliminate time wasted trying to find and share design information. The integration also enables your organization to eliminate unnecessary change orders by ensuring everyone is working from the latest design information.

Teamcenter integration for Inventor is a designer-centric solution that leverages

existing Teamcenter rules and enables Inventor data to be incorporated into a multi-CAD environment.

The user interface is embedded in Inventor and includes:

- A fully featured home browser, nearly identical to the native home browser in Teamcenter
- Full integration with both Ribbon and classic Inventor Menu user interfaces
- Teamcenter file status browser panel for reviewing product data management (PDM) information and performing PDM operations on the documents in the current Inventor session

Supported Inventor documents

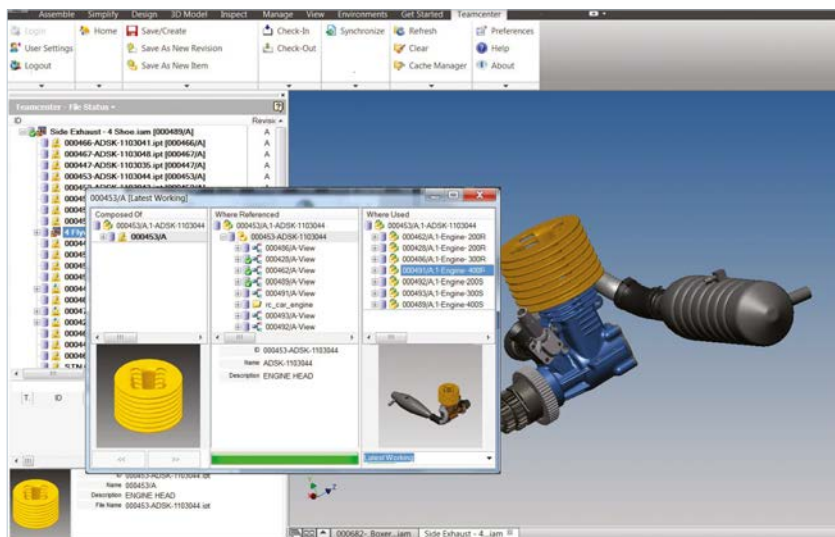
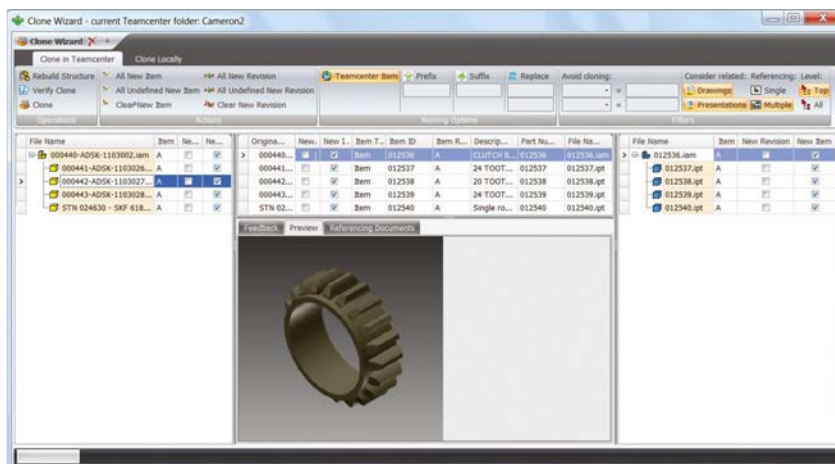
- Assemblies (.iam)
- Parts (.ipt)
- Inventor drawing format (.idw)
- Inventor DWG format (.dwg)
- AutoCAD DWG format (.dwg)
- Inventor Presentations (.ipn)

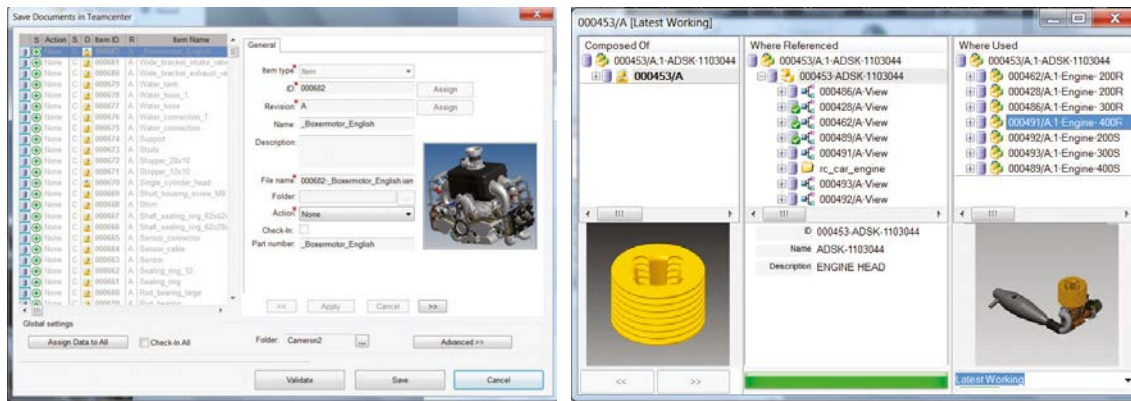
Supported Inventor data types

- All standard part, assembly and drawing entities
- Design Accelerator output
- iParts/iAssemblies
- Content Center Libraries
- Company libraries
- Frame Generator, Harness, Pipe and Tube datatypes

Supported integration functions

- Control versions and revisions of Inventor assemblies, parts, drawings, and presentation files
- Access Teamcenter from within Inventor (access Teamcenter workspace using familiar home browser functionality)
- Search and retrieve
- Thumbnail view
- Where used, where consumed





Features

- Access Teamcenter and Teamcenter Rapid Start capabilities directly from within Inventor
- Create and edit Inventor parts, drawings, presentations and assemblies under Teamcenter control
- Create and manage new product revisions and versions
- Bulk load entire folders of Inventor parts automatically into Teamcenter to facilitate easy deployment
- Automatically generate and save lightweight JT visualization files for Inventor parts
- Bi-directionally transfer Inventor document properties to/from Teamcenter
- Leverage full Teamcenter service oriented architecture (SOA) implementation to establish a foundation for future enhancement
- Check-in/check-out status
- Save new Inventor documents to Teamcenter using Teamcenter business objects rules for ID, name, revision and other attributes
- Open Inventor assemblies using Inventor "level of detail" rules
- Determine check-in/check-out, and ownership of all Inventor documents in an assembly
- Clone Inventor assemblies, parts, and drawings for design re-use and experimentation
- Place and rename components in an Inventor assembly
- Automatically transfer product structure and part-drawing links directly into Teamcenter
- Create, configure and edit assemblies using the familiar Inventor interface
- Bi-directionally transfer properties between Inventor and Teamcenter
- Automatically generate and save lightweight visualization JT™ files for Inventor parts
- Automatically generate PDF files for Inventor parts and drawings

Teamcenter Advantage

The Inventor integration is supported by both Teamcenter and Teamcenter Rapid Start which power innovation and productivity by connecting people and processes with knowledge.

Teamcenter is the de facto standard for PLM deployments and is backed by Siemens PLM Software's leadership in delivery. Users of Teamcenter can easily expand the scope of their PLM implementation by taking advantage of a comprehensive portfolio of applications as well as its proven scalability in terms of performance and global implementation.

Teamcenter Rapid Start is a preconfigured deployment option for Teamcenter that manages design data, as well as everyday tasks and processes; providing an ideal entry point into the Teamcenter product line for small and medium-sized businesses.

Contact

Siemens PLM Software
 Americas +1 314 264 8499
 Europe +44 (0) 1276 413200
 Asia-Pacific +852 2230 3308

www.siemens.com/plm

© 2014 Siemens Product Lifecycle Management Software Inc. Siemens and the Siemens logo are registered trademarks of Siemens AG. D-Cubed, Femap, Fibersim, Geolus, GO PLM, I-deas, JT, NX, Parasolid, Solid Edge, Syncrofit, Teamcenter and Tecnomatix are trademarks or registered trademarks of Siemens Product Lifecycle Management Software Inc. or its subsidiaries in the United States and in other countries. All other logos, trademarks, registered trademarks or service marks belong to their respective holders.

11855-Y7 8/14 B