



SIEMENS



Siemens PLM Software

Teamcenter integration for Pro/ENGINEER

Capture, manage and share Pro/ENGINEER data using Teamcenter, the de facto standard for PLM deployment

Benefits

- Less time spent by your technical staff in finding the correct revisions of Pro/ENGINEER data
- Eliminate guesswork and rework by leveraging Teamcenter to control design configuration
- Faster product change and approval processes resulting in decreased time-to-market
- Pro/ENGINEER files integrated with all of your technical data to provide a single source of product information that supports your complete design-through-manufacturing process

Summary

Teamcenter® software's integration for Pro/ENGINEER allows you to reduce your product development cycle times and cost by enhancing your Pro/ENGINEER environment to deliver a single source of product data for your design and manufacturing teams. The integration provides access to a full range of product lifecycle management (PLM).

Streamlined product development

Teamcenter integration for Pro/ENGINEER enables you to capture, manage, control and share Pro/ENGINEER and Creo Parametric data with your product development team and supply chain participants. Providing a single source of product and process data, the capabilities go beyond workgroup CAD data management and is optimized for scalability across a wide area network, enabling geographically distributed design centers to connect to a single database and volume server.

Capture, manage and share

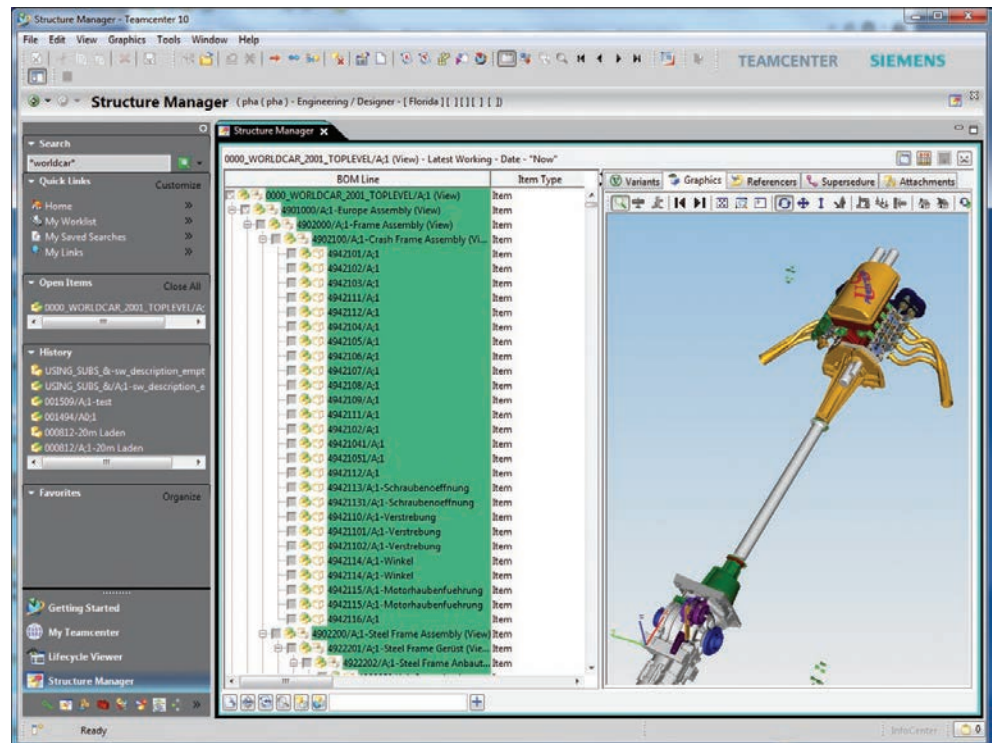
Pro/ENGINEER data in a PLM environment Teamcenter integration for Pro/ENGINEER enables all the design information created in Pro/ENGINEER to be captured, controlled and shared by your organization in a single, highly secure PLM environment. This environment provides version management and access controls to ensure that the right people get the right information at the right time.

Using this integration, design teams can quickly search and access Pro/ENGINEER parts, assemblies, drawings and user-defined features to eliminate time wasted trying to find and share design information, while reducing change orders by making certain that everyone is working from the latest design information.

Teamcenter integration for Pro/ENGINEER

Features

- Use Teamcenter functions from the Pro/ENGINEER interface
- Create and edit Pro/ENGINEER models, drawings and assembly relationships
- Create new product revisions or version updates for work in progress
- Generate drawing title blocks using Teamcenter attributes
- Manage mechanical properties of Pro/ENGINEER models and assemblies
- Provide on-demand access to the user's Teamcenter workplace



Extend the value of Pro/ENGINEER with Teamcenter

Everyday task and process management

Teamcenter delivers a PLM environment that is focused on managing everyday tasks and processes for design through manufacturing. Industry best practice workflows for product release and engineering change are included to ensure that these processes are conducted consistently and efficiently. A simple and intuitive user interface, with configurable levels of change notification, enables Pro/ENGINEER designers to work efficiently and effectively in a collaborative environment.

Multi-CAD collaboration and design in-context

Teamcenter multi-CAD support enables design teams to create and modify component designs on any major CAD system, and assemble their innovations into a multi-CAD product design. Teamcenter synchronizes product information to make certain that everyone is working from the

latest designs while automatically managing both native and neutral CAD representations.

Further improving productivity, Teamcenter design "in-context" and spatial search capability enables Pro/ENGINEER designers to quickly navigate large amounts of product and process information needed to establish the proper spatial context for their design activity. By performing detailed searches of the model, such as "show me everything connected to the engine, braking or rear suspension system" Teamcenter will retrieve only the relevant design data, regardless of the source of the multi-CAD data, helping the designer retain the context of the total product.

Supported Pro/ENGINEER items

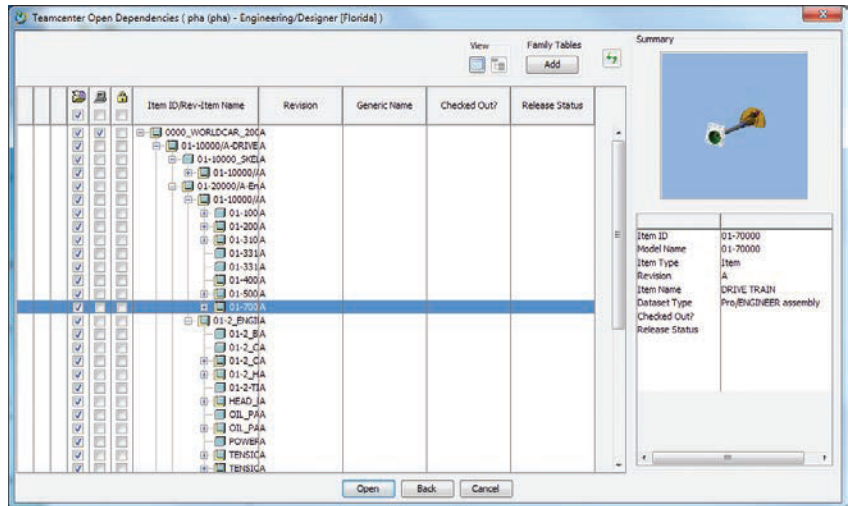
- Assemblies
- Diagrams
- Drawings
- Formats
- Layouts
- Manufacturing
- Markups
- Parts
- Reports
- Sections
- User-defined features (UDFs)

Integration for Pro/ENGINEER – supported functions

- Load – using existing components to create an assembly
- Save – as a new revision, new version or new design
- Bi-directional attribute mapping
- Create, configure and edit assemblies using Teamcenter (top down) or Pro/ENGINEER (bottom up)
- Automatically generate and vault lightweight visualization (JT™ data format) files for digital mockup
- Accurate translation and rendering of assembly features
- Automatically create and view preview images for parts, assemblies and drawings
- Save mechanical properties including volume, weight, surface area, moments of inertia
- Automatic design validation through ModelCHECK™, with results stored in Teamcenter
- Access Teamcenter workspace and functions such as search, where used, baseline and workflow
- Selectively update to new versions or revisions without reloading your in-session assembly

Provide support for:

- Simplified representations
- Family tables
- Full or partial structure duplication (assembly “clone”)
- Bulk data import and export
- Filter by data types to control volume of files delivered to the client
- Seed parts
- Rename



- CAD-centric transfer of ownership between federated sites
- Multiple Pro/ENGINEER and Creo versions

Teamcenter advantage

The Pro/ENGINEER integration is supported by both Teamcenter and Teamcenter Rapid Start, which power innovation and productivity by connecting people and processes with knowledge.

- Teamcenter is the de facto standard for PLM deployments and is backed by Siemens PLM Software’s leadership in delivering it. Users of Teamcenter can easily expand the scope of their PLM implementation by taking advantage of a comprehensive portfolio of applications as well as its proven scalability in terms of performance and global implementation.
- Teamcenter Rapid Start is a preconfigured deployment option for Teamcenter that manages design data, as well as everyday tasks and processes, providing an ideal entry point into the Teamcenter product line for small and medium-sized businesses.

Contact
 Siemens PLM Software
 Americas +1 314 264 8499
 Europe +44 (0) 1276 413200
 Asia-Pacific +852 2230 3308

www.siemens.com/plm

© 2014 Siemens Product Lifecycle Management Software Inc. Siemens and the Siemens logo are registered trademarks of Siemens AG. D-Cubed, Femap, Fibersim, Geolus, GO PLM, I-deas, JT, NX, Parasolid, Quality Planning Environment, Solid Edge, Syncrofit, Teamcenter and Tecnomatix are trademarks or registered trademarks of Siemens Product Lifecycle Management Software Inc. or its subsidiaries in the United States and in other countries. All other logos, trademarks, registered trademarks or service marks belong to their respective holders.
 2844-Y4 7/14 C



844-GEO-SUPT
 support@geopl.m.com
 geopl.m.com